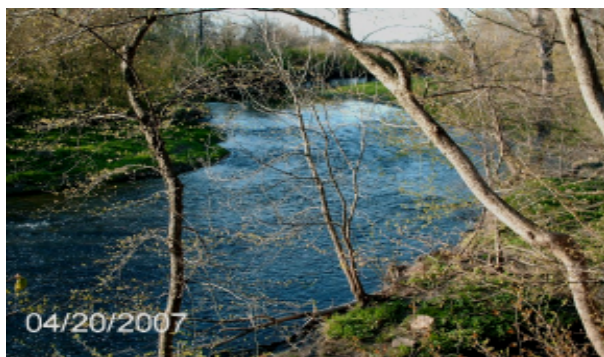


RIDE IN ONE OF OUR  
THREE ARENAS...



Or On Our Beautiful Trails!



Ride with us **year around.**

See the beautiful Rock Creek Canyon from horseback, then relax by a **roaring fire** in our Lodge.

Horseback riding weekends from **\$100 per person.**



[www.campshaw.org](http://www.campshaw.org)



Presents the  
**Camp Shaw/  
State Park Stables**

**815-802-2050 or 815-  
933-3011**



**TRAIL RIDES:** For Kids and Adults

1 Hour 2 Hour and ½ Hour Rides

Beginners thru Advanced From \$15-\$50

Two Fer Thursdays=Buy one ride get 2<sup>nd</sup> Half Price

**RIDING LESSONS:** In Arena, or on the Trails

Private lesson=\$40 per hour

Weekly Group Lesson=\$20 per person

**PONY RIDES** Children under 100lbs = \$15



**“THERE IS SOMETHING ABOUT THE OUTSIDE OF A HORSE THAT IS GOOD FOR THE INSIDE OF A HUMAN”**

**-Will Rodgers**

**Introducing the ONLY 4-H  
Horse Club in Kankakee  
County!! K4E Kids 4  
Equines**

**Meet 2nd & 4th Tuesdays  
of Every Month at Graham  
Hall at Camp Shaw 6641 N  
6000 W Rd. 6:30-8:00 pm.**

**Call KC at 815-341-7770 for  
more details**



### **Pony/Horse Parties Available!!**

- ◆ Package #1 includes 1/2 hour rides for 10 kids and use of our covered shelter and petting zoo = \$150
- ◆ Package #2 includes cake, 1/2 hour rides for up to 12, petting zoo and use of our covered shelter = \$190
- ◆ Package #3 includes cake, shelter petting zoo and 1 hour ride for up to 8 riders = \$210
- ◆ Package #4 includes cake, shelter, petting zoo and 1 hour ride for up to 10 riders = \$260

### **Additional Options**

Bonfire \$25      Horse-y decorations \$25

Pool 1/2 hr = \$75 1 hr = \$125      May-Sept.

**Come and stay with us. Ride  
all day and sit under the stars  
all night.**

**Stay in new heated cabins  
that sleep up to 14 or our  
cozy bunkhouses that sleep  
2-6.**

**Let us cook for you or bring  
your own!**



**Roast marshmallows over a  
bonfire and listen to the wind  
in our singing pines**

**We can arrange a vacation  
package for you overnight or  
by the week.**

**Call Susan at 815-933-3011**

**“HORSES LEND US THEIR STRENGTH SO THAT WE TOO CAN FLY”**

**- APACHE PROVERB**